

## Fellowship Faculty

### Hernán Correa, MD

Pediatric Pathology Program Director  
Associate Professor of Pathology,  
Microbiology and Immunology

### Jiancong Liang, MD, PhD

Assistant Professor of Pathology,  
Microbiology and Immunology

### Huiying Wang, MD

Assistant Professor of Pathology,  
Microbiology and Immunology



Interested applicants should submit a cover letter, application\*, CV, personal statement, USMLE scores, passport size photo, three letters of recommendation, and ECFMG certificate (if applicable) to:

Vanderbilt University Medical Center  
Pathology, Microbiology and Immunology  
Graduate Education Office  
Attn: Pediatric Pathology Fellowship  
1161 21st Ave South  
CC-3322 MCN  
Nashville, TN 37232-2561

[path.fellow@vumc.org](mailto:path.fellow@vumc.org)

\*Application and pertinent information can be found under Graduate Medical Education at:

<https://www.vumc.org/gme/13198>

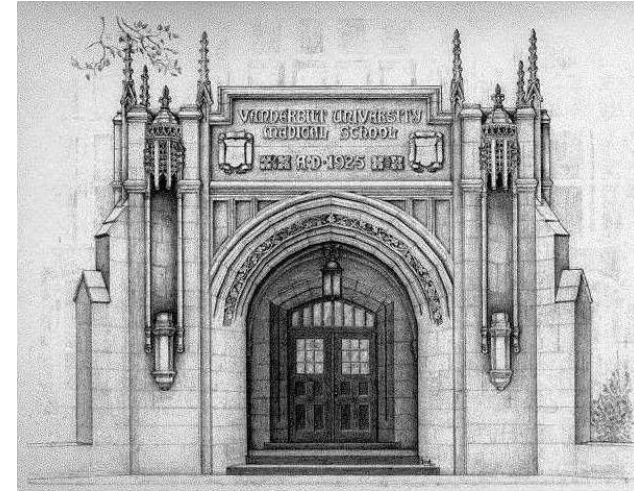
VANDERBILT UNIVERSITY  School of Medicine



Vanderbilt University Medical Center  
Pathology, Microbiology and Immunology  
Graduate Education Office  
Attn: Pediatric Pathology Fellowship  
1161 21st Ave South  
CC-3322 MCN  
Nashville, TN 37232-2561

(615) 343-4882 x2  
[path.fellow@vumc.org](mailto:path.fellow@vumc.org)

VANDERBILT  UNIVERSITY  
MEDICAL CENTER



*Vanderbilt  
University  
Medical Center  
Pediatric  
Pathology  
Fellowship*

## *Pediatric Pathology at Vanderbilt University Medical Center*

The Department of Pathology, Microbiology and Immunology at Vanderbilt University, Nashville, Tennessee, offers a one year fellowship in Pediatric Pathology. The program provides a strong curriculum in all aspects of pediatric pathology, including pediatric surgical pathology, pediatric autopsies—medical & forensic, materno-fetal pathology, hematopathology, pediatric cytology, and neuropathology. There is one fellow per year. Clinical and translational research opportunities are available and strongly encouraged.

The Monroe Carell Jr. Children's Hospital at Vanderbilt (MCJCH) accessioned more than 9,500 pediatric surgical pathology cases, over 1,500 placentas and over 50 pediatric autopsies in 2018.

The faculty includes four pediatric pathologists and 24 anatomic pathologists encompassing a wide range of subspecialty expertise, including cytology, hematopathology, neuropathology, nephropathology, soft tissue pathology, gastrointestinal pathology, pulmonary pathology,

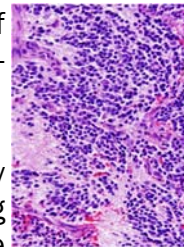
breast pathology, gynecologic pathology, and genitourinary pathology.

Vanderbilt University Medical Center (VUMC) and MCJCH are expanding in many areas with a top NCI-designated Comprehensive Cancer Center, multifaceted organ and stem cell transplant programs innovative educational programs, clinical and translational research and basic science programs.



The pediatric pathology fellow rotates at MCJCH, VUMC and the Forensic Medical Management Services. Among other duties, fellows perform independent interpretation of frozen sections, while supervising residents.

The pediatric pathology fellow is part of a growing departmental graduate medical education community that includes 25 residents, as well as fellows in Anatomic Pathology, Cytopathology, Gastrointestinal Pathology, Renal Pathology, Hematopathology, Neuropathol-



ogy, Molecular Genetic Pathology, Microbiology, Transfusion Medicine and Clinical Chemistry.

Located in the heart of Nashville, Tennessee, Vanderbilt University is one of the nation's leading research and teaching institutions, with undergraduate medical program contiguous on the same campus. Nashville, the capital of Tennessee, is a growing cosmopolitan area with a population exceeding 1.2 million, diverse entertainment, excellent schools and ready access to outdoor activities.



VANDERBILT UNIVERSITY  
MEDICAL CENTER

Pathology, Microbiology and Immunology  
Graduate Education Office  
Attn: Pediatric Pathology Fellowship  
1161 21st Ave South  
CC-3322 MCN  
Nashville, TN 37232-2561

(615) 343-4882 x2  
path.fellow@vumc.org